

## Driangel 6 / Untergeschoss

### Disporaum

**6.Di 1**

Nutzfläche:

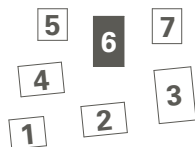
ca. 22.5 m<sup>2</sup>

### Disporaum

**6.Di 2**

Nutzfläche:

ca. 16.5 m<sup>2</sup>



Massstab 1:150

0 5m

## Driangel 6 / Erdgeschoss

### 3 ½-Zimmer-Wohnung

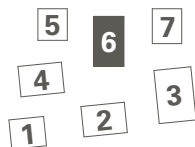
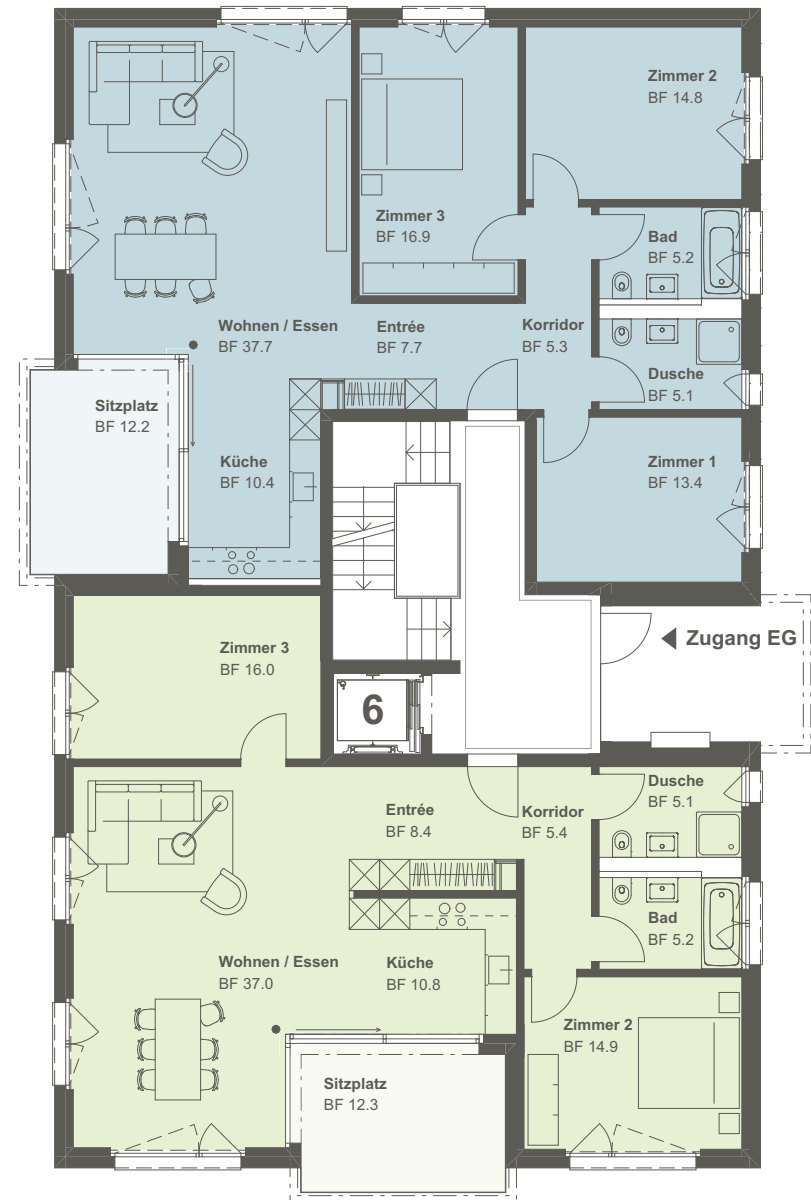
**6.01**

BWF:	ca. 107.0 m <sup>2</sup>
Sitzplatz:	ca. 12.3 m <sup>2</sup>
Keller:	ca. 7.3 m <sup>2</sup>

### 4 ½-Zimmer-Wohnung

**6.02**

BWF:	ca. 121.5 m <sup>2</sup>
Sitzplatz:	ca. 12.2 m <sup>2</sup>
Keller:	ca. 7.1 m <sup>2</sup>



Masstab 1:150



## Driangel 6 / 1. Obergeschoss

### 4 ½-Zimmer-Wohnung 6.11

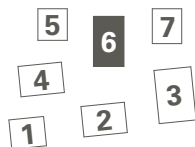
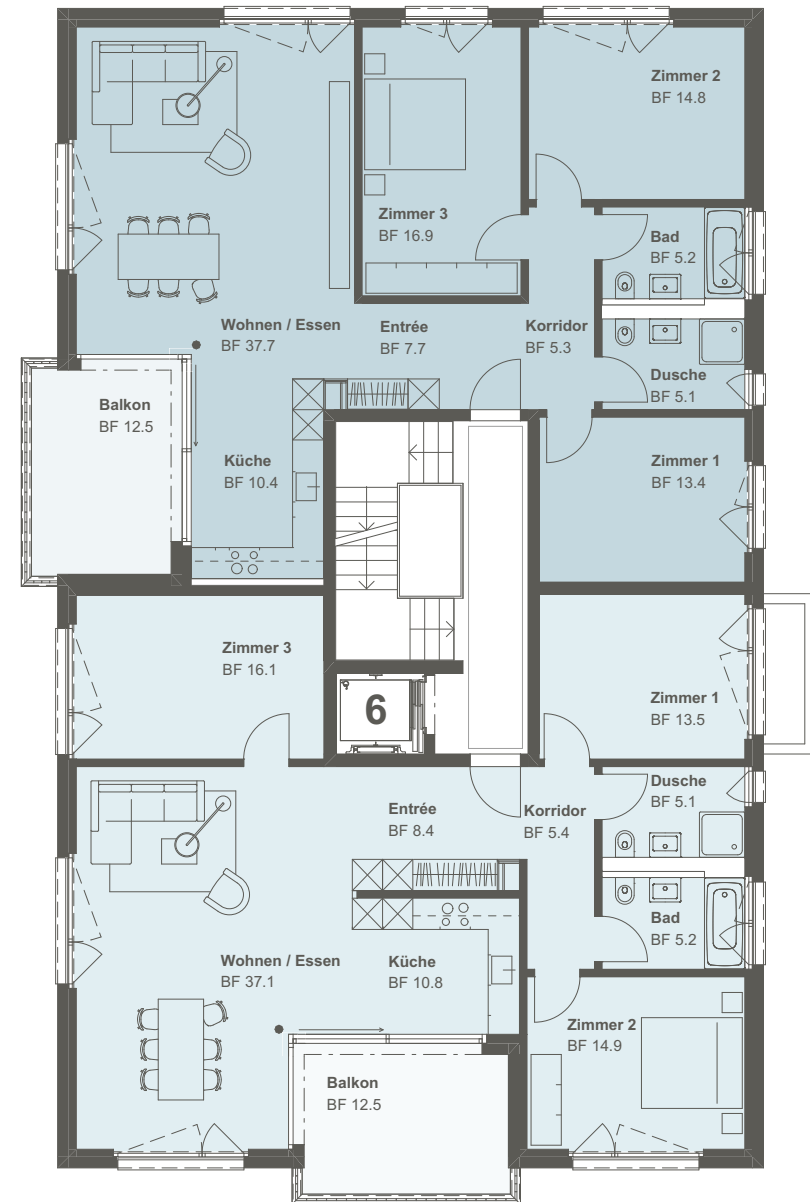
6.11

BWF:	ca. 121.0 m <sup>2</sup>
Balkon:	ca. 12.5 m <sup>2</sup>
Keller:	ca. 7.1 m <sup>2</sup>

### 4 ½-Zimmer-Wohnung 6.12

6.12

BWF:	ca. 121.5 m <sup>2</sup>
Balkon:	ca. 12.5 m <sup>2</sup>
Keller:	ca. 7.1 m <sup>2</sup>



Masstab 1:150

0 5m



## Driangel 6 / 2. Obergeschoss

### 4 ½-Zimmer-Wohnung 6.21

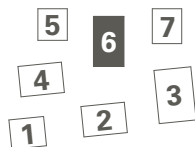
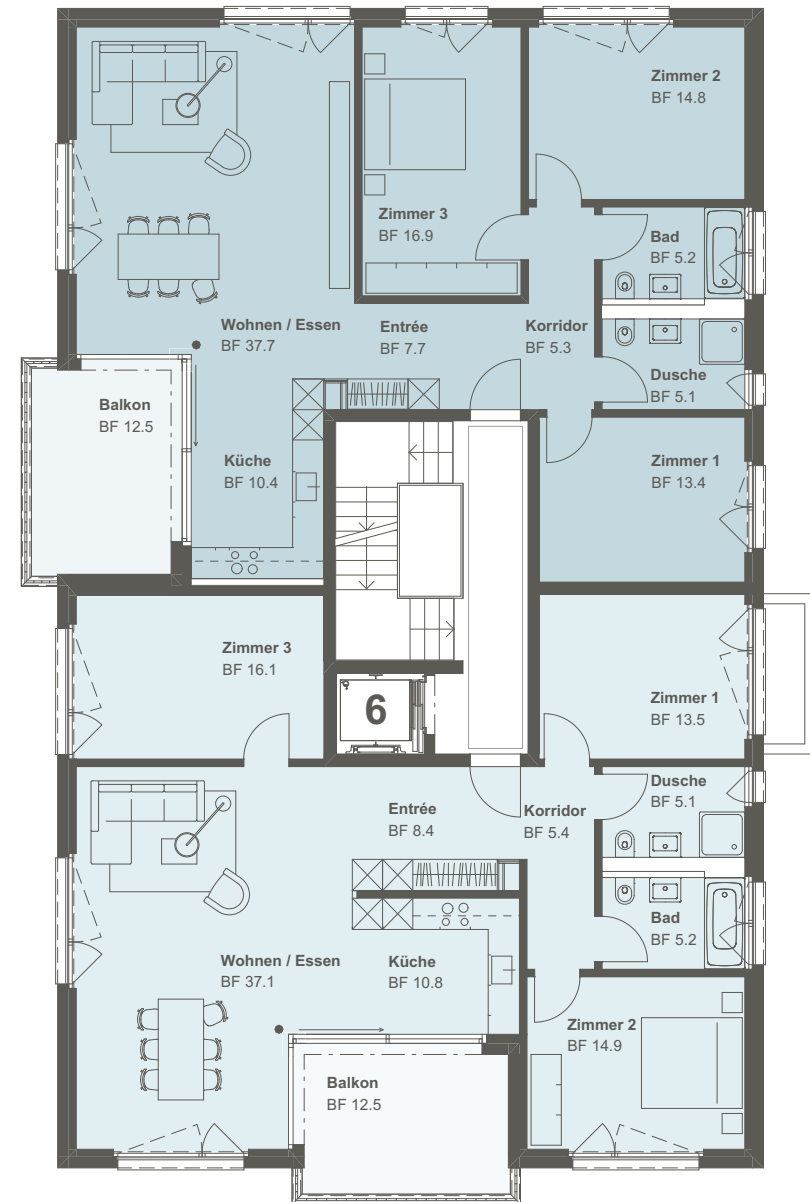
6.21

BWF:	ca. 121.0 m <sup>2</sup>
Balkon:	ca. 12.5 m <sup>2</sup>
Keller:	ca. 7.1 m <sup>2</sup>

### 4 ½-Zimmer-Wohnung 6.22

6.22

BWF:	ca. 121.5 m <sup>2</sup>
Balkon:	ca. 12.5 m <sup>2</sup>
Keller:	ca. 7.0 m <sup>2</sup>



Masstab 1:150



## Driangel 6 / Dachgeschoss

### 4 ½-Zimmer-Wohnung 6.31

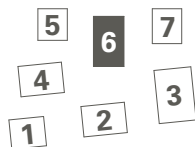
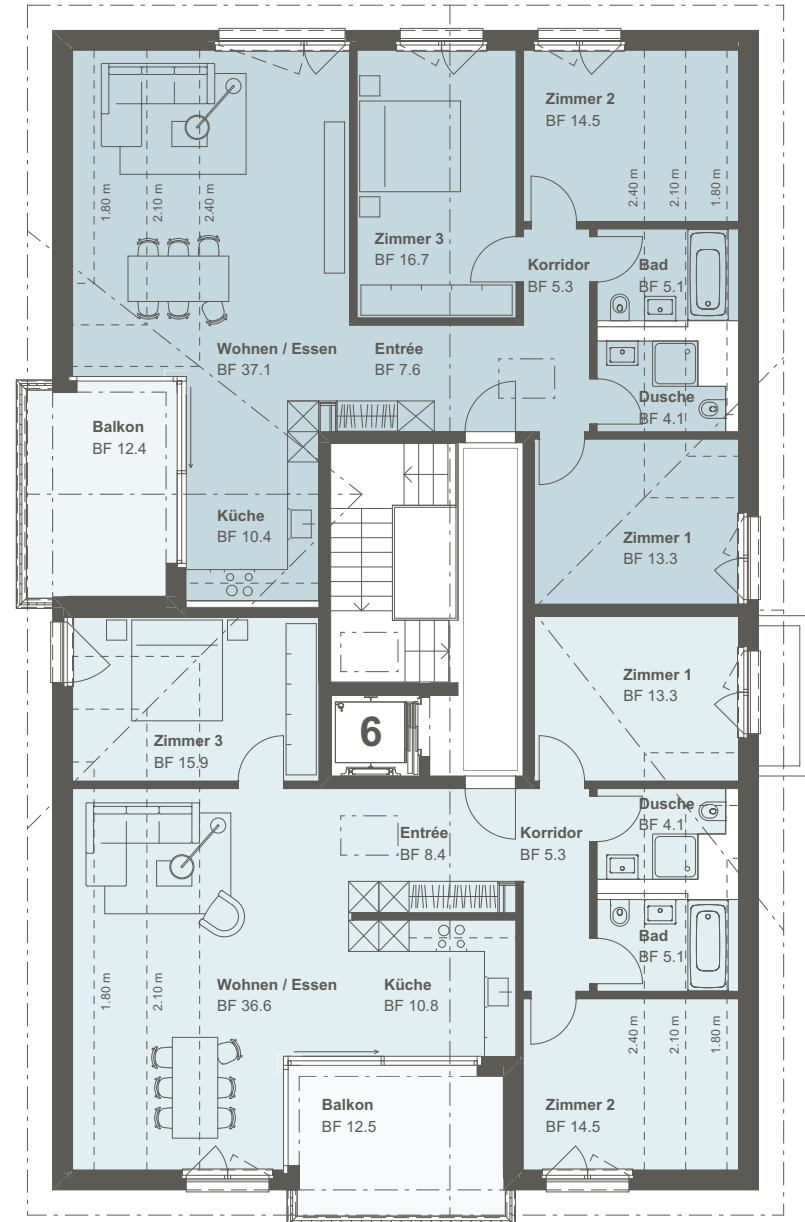
**6.31**

BWF:	ca. 119.5 m <sup>2</sup>
Balkon:	ca. 12.5 m <sup>2</sup>
Keller:	ca. 6.9 m <sup>2</sup>

### 4 ½-Zimmer-Wohnung 6.32

**6.32**

BWF:	ca. 120.0 m <sup>2</sup>
Balkon:	ca. 12.4 m <sup>2</sup>
Keller:	ca. 6.9 m <sup>2</sup>



Masstab 1:150

